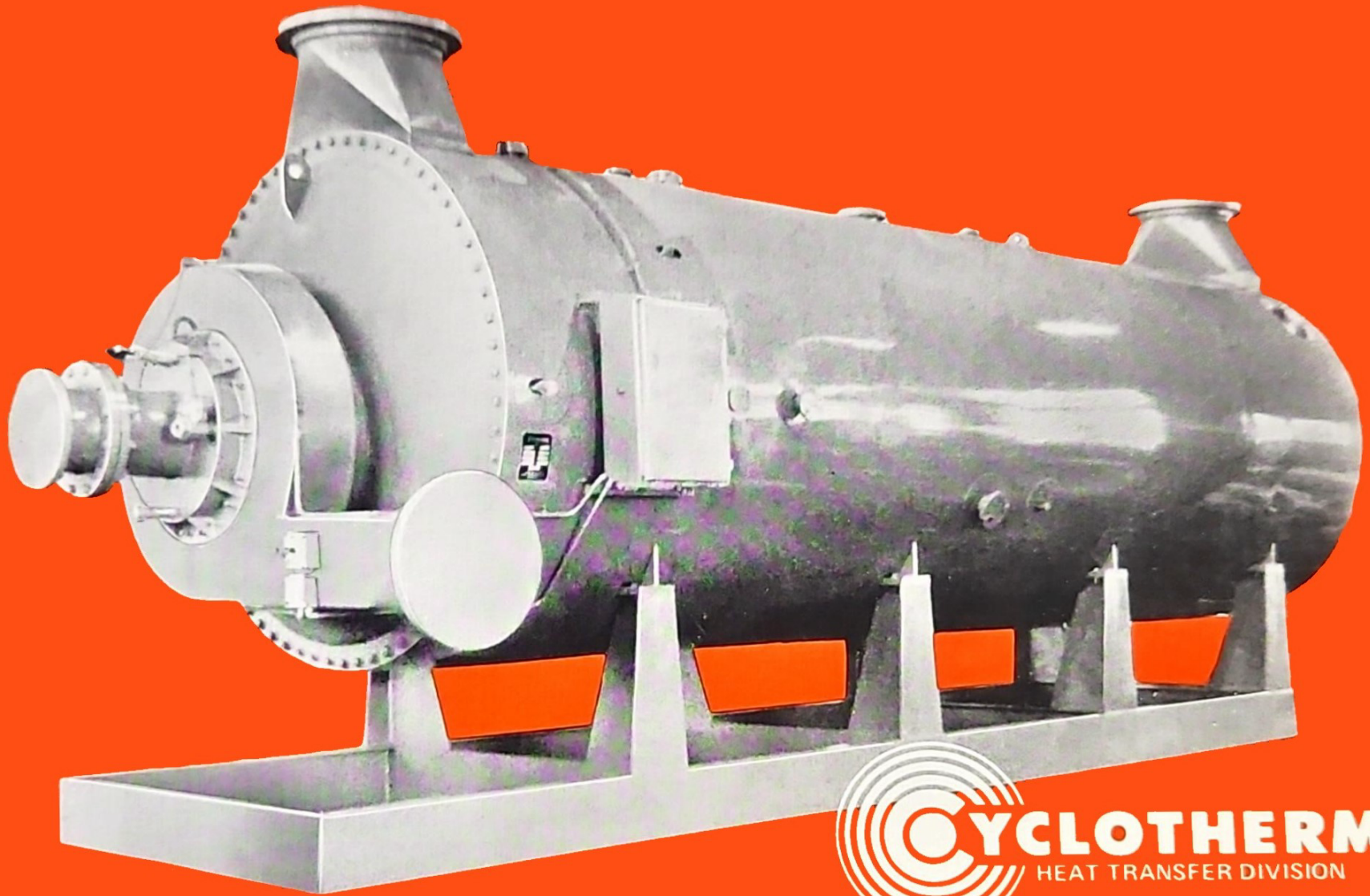
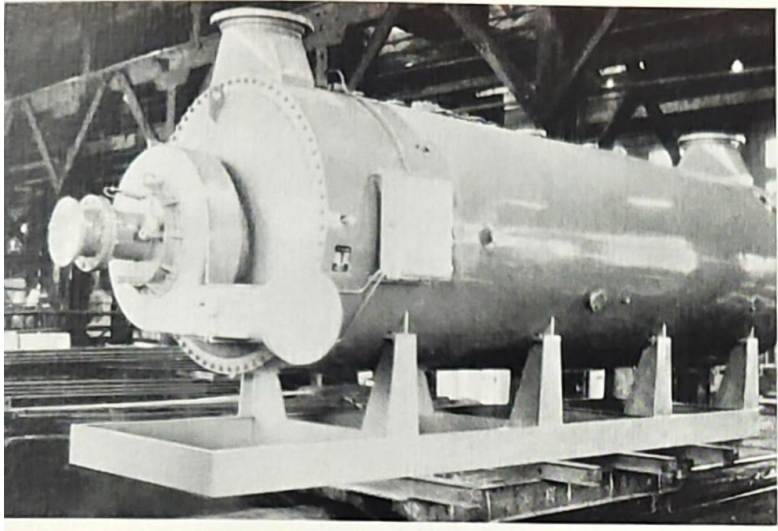
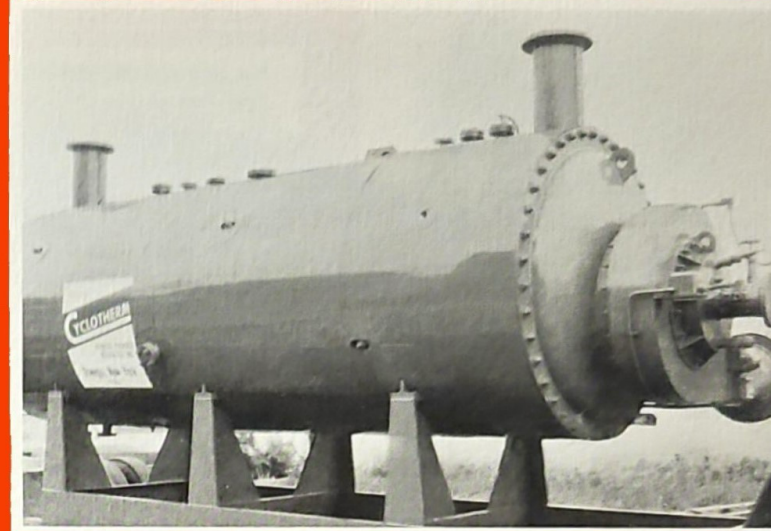


WASTE/HEAT/UNITS

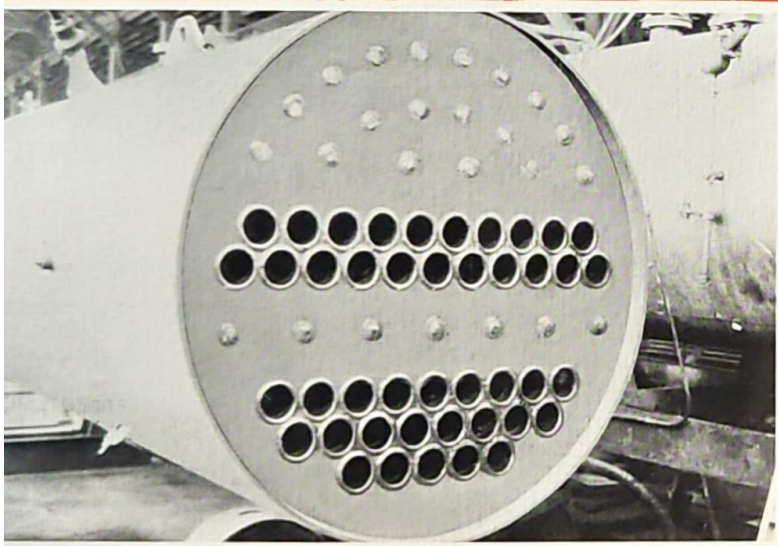




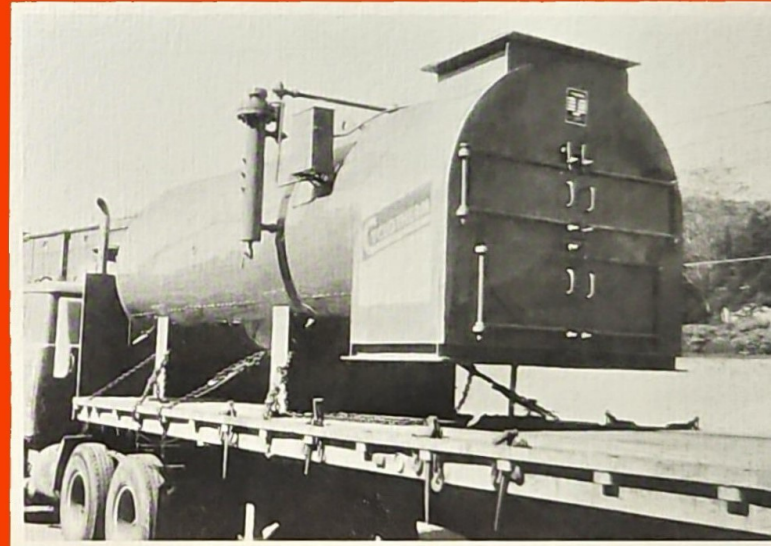
3 Pass – 300 #W.P. Hydrogen Sulfide Burners with Acid Gas Burner –
20,000# Steam per hour – 100 tons/day Sulfur Recovery.

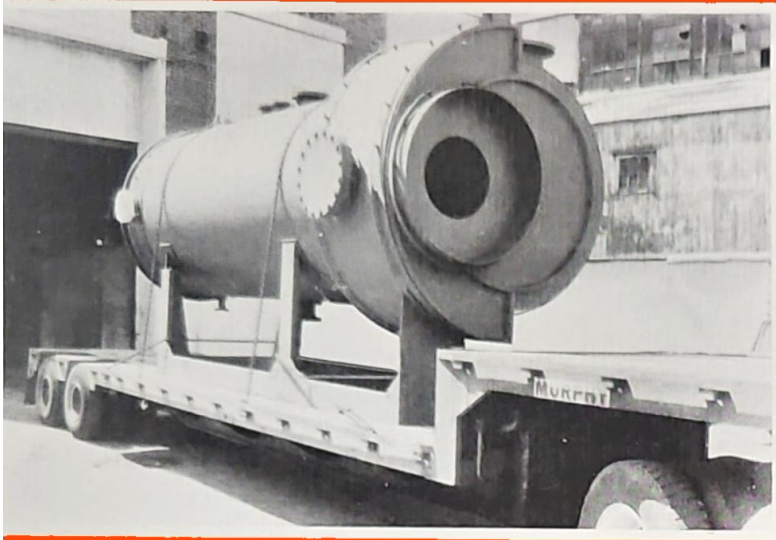


3 Pass – 300 #W.P. Sour Water Unit with burner – 4500# Steam per Hour.

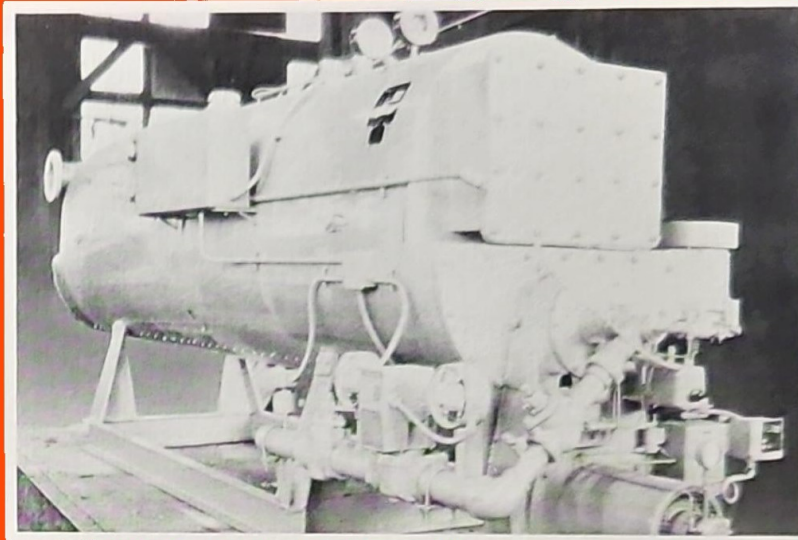


2 Pass – 200# W.P. Unit Recovery Waste Heat from silicate Furnace
7000# steam per hour. On truck ready for shipment.

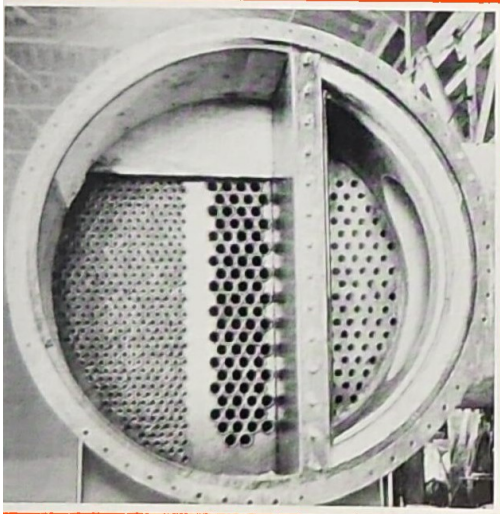




2 Pass – 200 #W.P. Sulphur plant Waste Heat Exchanger – using glycol water at 325°F to recover heat.



Sludge Heater for Sewage Treatment Plant – capacity 1,125,000 BTU/Hr. (available to 5,000,000 BTU/Hr) Burns Sewage Gas as available then automatically switching to alternate fuel.



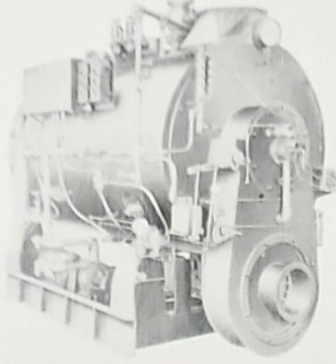
3 Pass – 200# W.P. Sulphur Plant Waste Heat Boiler – 25,000# steam per hour – 25 Tons sulphur recovery per day.

Cyclotherm has been designing and manufacturing Heat Exchangers of all types for over 50 years. Starting in 1965, special attention was directed toward Waste Heat Recovery Units, including Acid Gas Burning and Sulphur Recovery types. Since then we have supplied many such units, each individually tailored to the job requirements, whether it be one, two, three, four or five gas passes. Some were for steam production; some water heating in the normal 180°-200° temperature range and some for heating various glycol-water mixtures up to 350°F. Pressures ranged from 15# steam – 30# water to 300# steam.

The savings made possible by utilizing heat otherwise ignored or wasted, are shown on the curves on this brochure.

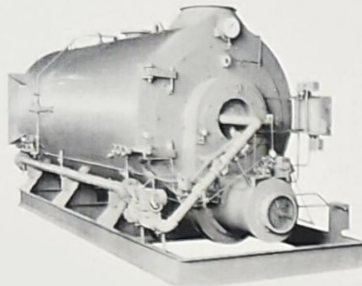
Put money in your pocket by utilizing Cyclotherm Waste Heat Technology. Let's talk about the savings that can be yours. Contact us today!

OTHER CYCLOTHERM PRODUCTS



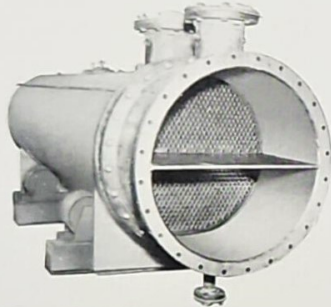
MARINE BOILERS

Model "MC" - From 800 - 7500# Steam Per Hour - Meets Coast Guard and A.B.S. Requirements.



PACKAGE BOILERS

15 to 750 HP
15 to 200# Steam & Hot Water



HEAT EXCHANGERS

Designs available to suit your plant needs. Straight Tube, U tube, Carbon Steels or Special Alloys, Fixed or floating Heads, Multiple Pass.

Savings resulting from Waste Heat Recovery

Waste Heat Regeneration
And increasing profits through
Cyclotherm Technology

